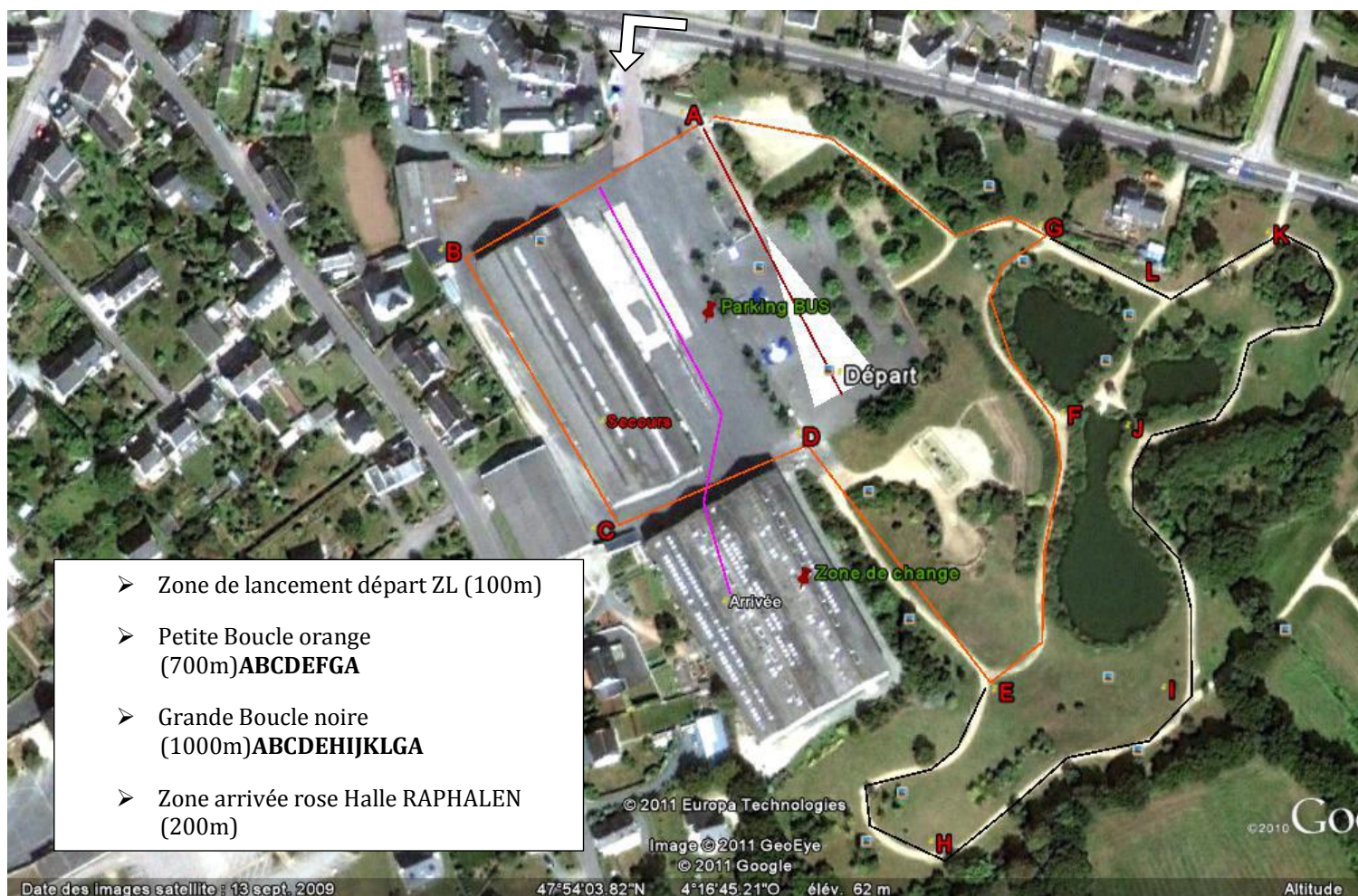


## CROSS DISTRICT 2014/2015 – Plonéour-Lanvern Mercredi 12 novembre



- Zone de lancement départ ZL (100m)
- Petite Boucle orange (700m) **ABCDEFGA**
- Grande Boucle noire (1000m) **ABCDEFGHIJKLGA**
- Zone arrivée rose Halle RAPHALEN (200m)

| Horaire DEPART | Catégorie | Année de Naissance | Distances | Parcours     |
|----------------|-----------|--------------------|-----------|--------------|
| 14 H           | BF2       | 2002               | 2000m     | ZL+1PB+1GB+A |
| 14 H 20        | BF1       | 2003               | 2000m     | ZL+1PB+1GB+A |
| 14 H 40        | BG2       | 2002               | 2400m     | ZL+2GB+A     |
| 14 H 55        | BG1       | 2003               | 2400m     | ZL+2GB+A     |
| 15 H 15        | MF1-MF2   | 2001/2000          | 2700m     | ZL+2PB+1GB+A |
|                | CF        | 1998/1999          | 2700m     | ZL+2PB+1GB+A |
|                | JF        | 1996/1997          | 2700m     | ZL+2PB+1GB+A |
| 15 H 40        | MG2       | 2000               | 3000m     | ZL+1PB+3GB+A |
|                | CG        | 1998/1999          | 4000m     | ZL+1PB+3GB+A |
|                | JG        | 1996/1997          | 4000m     | ZL+1PB+2GB+A |
| 16 H 05        | MG1       | 2001               | 3000m     | ZL+1PB+2GB+A |